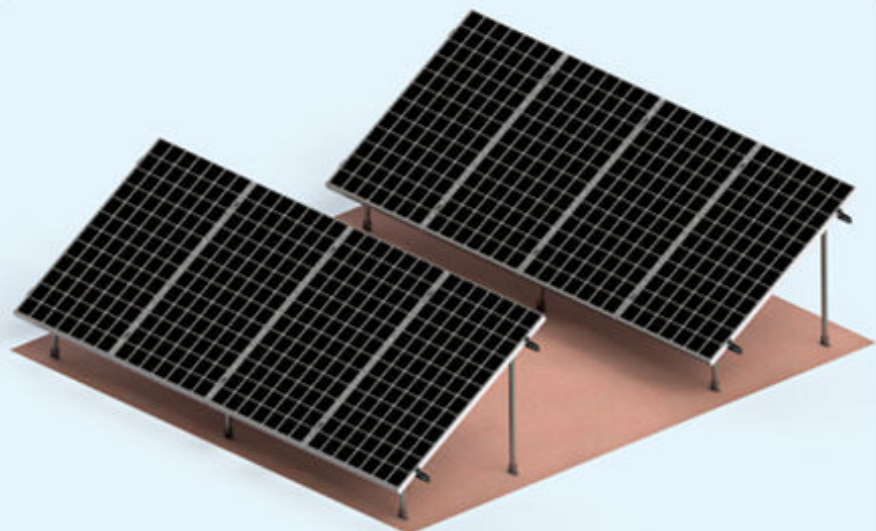


## 前后立柱地面支架



本系统由以下零部件组成/This system consists of the following components:



导轨  
load rail



U型底座、方管、L型连接件、平弹垫、滑块螺母、内六角螺栓  
U type base, square tube, L type connector, slider nut, inner six angle bolt, flat elastic pad



U型底座、方管、L型连接件、平弹垫、滑块螺母、内六角螺栓  
U type base, square tube, L type connector, slider nut, inner six angle bolt, flat elastic pad



边压块、内六角螺栓、弹簧垫圈、滑块螺母  
Edge pressing block, six hexagon bolt/spring washer, nut slide



中压块、内六角螺栓、弹簧垫圈、滑块螺母  
Medium pressure block, six hexagon bolt/spring washer, nut slide

## 产品说明/DESCRIPTION:

- 安装位置/Installation place:  
地面/平面屋顶/Ground / flat roof
- 斜面支架组件/Module slop:  
根据实际需求/According to the practical demand
- 风力承载能力/Wind load:  
40m/s、32.5kg/m<sup>2</sup>、13级
- 雪载承受力/Snow load:  
70kg/m<sup>2</sup>
- 支架类型/Module type  
框架/Frame
- 材料/Material:  
铝型材/Aluminium profile
- 颜色/Colour:  
本色/Natural
- 使用年限/Warranty time:  
25 years.

**ADVANTAGES:** 1. 容易安装/Easy installation.

2. 它不破坏植被/It does not damage the vegetation.

3. 强度高，安装范围广/High strength, wide range of installation



工程实例照片

